

Joint WMO/IOC Technical Commission for
Oceanography - Ship Observation Team

**End-to-end report of the
ASAP data dissemination
performance
2010
January to December**

1. Introduction

Météo-France is in charge of a end-to-end report of the ASAP data dissemination performance.

The matter of this paper is to evaluate the results of the last year (January 2010 – December 2010).

2. Information available at Météo-France

TEMP-SHIP messages are received at LFPW (Toulouse) from EGRR (Exeter), EDZW (Offenbach) and Email.

The following information is available :

Reception at LFPW	Broadcast by LFPW
Call sign	Call sign
Header	Channel
Channel	Broadcast date
Reception date	Time lapse
Size	Broadcast size
Format	Recipient
Error	
Operator	

3. List of call signs available

Country	Call sign	Country	Call sign
Denmark	ASDK01	Japan	JCCX
	ASDK02		JGQH
	ASDK3		JIVB
E-ASAP	ASEU01		JDWX
	ASEU02		JNSR
	ASEU03	Norway	LDWR
	ASEU04	South Africa	ZSAF
	ASEU05	Spain	ASES01
France	ASFR1	United Kingdom	ASGB01
	ASFR2	USA	WTEC
	ASFR3	Iceland	ASIS01
	ASFR4	Australia	3FPI7
Germany	ASDE01		
	ASDE02		
	ASDE03		
	ASDE04	Test	SHIP
	DBLK		ASDE09
	DFCG		

4. Origin of the messages

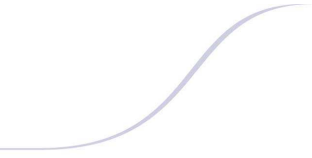
Call sign	Offenbach	Exeter	Telex	Email	Mariner	Supervis	X25
ASEU01	968	0	0	0	0	0	0
ASEU02	1012	0	0	0	0	0	0
ASEU03	910	0	0	0	0	0	0
ASEU04	1162	0	0	0	0	0	0
ASEU05	1052	0	0	0	0	0	0
ASDE01	1368	0	0	0	0	0	0
ASDE02	1180	0	0	0	0	0	0
ASDE03	1256	0	0	0	0	0	0
ASDE04	1140	0	0	0	0	0	0
DBLK	1639	0	0	0	0	0	0
ASGB01	752	0	0	0	0	0	0
ASDK01	1388	0	0	0	0	0	0
ASDK02	1366	0	0	0	0	0	0
ASDK3	1067	0	0	0	0	2	0
ASES01	205	0	0	395	0	0	0
ASFR1	0	0	0	876	0	15	0
ASFR2	0	0	0	1073	0	6	0
ASFR3	0	0	0	690	0	9	0
ASFR4	0	0	0	624	0	6	1
ASIS01	6	0	0	0	0	0	0
JGQH	0	201	0	0	0	0	0
JDWX	0	8	0	0	0	0	0
JNSR	0	2247	0	0	0	0	0
Test							
ASDE09	14	0	0	0	0	0	0
Wrong or strange call sign							
FQWZ	0	0	0	2	0	0	0
OFF	1	0	0	0	0	0	0
XXXXX	745	2867	0	252	0	2	1
numer.	17	0	0	3	0	0	0

Mariner: French navy military sounding
 Supervis: handled by operator

5. Global system performance

Month	Origin	Nb of messages received	Nb of messages in error	Percentage of messages in error	Nb of messages with operator action	Percentage of messages with operator action
2010-Jan	Offenbach	1474	1	0,07		
	Exeter	318	0	0		
	Telex	0	not relevant	not relevant		
	Email	221	not relevant	not relevant		
	Mariner	0	not relevant	not relevant		
	X25	0	not relevant	not relevant		
	Supervis	0	0	not relevant		
	Total	1792	1	0,06	0	0
2010-Feb	Offenbach	1224	0	0		
	Exeter	188	0	0		
	Telex	0	not relevant	not relevant		
	Email	266	not relevant	not relevant		
	Mariner	0	not relevant	not relevant		
	X25	0	not relevant	not relevant		
	Supervis	1	0	0		
	Total	1412	0	0	1	0,07
2010-Mar	Offenbach	1382	0	0		
	Exeter	248	0	0		
	Telex	0	not relevant	not relevant		
	Email	359	not relevant	not relevant		
	Mariner	0	not relevant	not relevant		
	X25	0	not relevant	not relevant		
	Supervis	0	0	not relevant		
	Total	1630	0	0	0	0
2010-Apr	Offenbach	1399	0	0		
	Exeter	248	0	0		
	Telex	0	not relevant	not relevant		
	Email	329	not relevant	not relevant		
	Mariner	0	not relevant	not relevant		
	X25	0	not relevant	not relevant		
	Supervis	0	0	not relevant		
	Total	1647	0	0	0	0
2010-May	Offenbach	1513	4	0,26		
	Exeter	902	0	0		
	Telex	0	not relevant	not relevant		
	Email	350	not relevant	not relevant		
	Mariner	0	not relevant	not relevant		
	X25	1	not relevant	not relevant		
	Supervis	0	0	not relevant		
	Total	2415	4	0,17	0	0
2010-Jun	Offenbach	1300	0	0		
	Exeter	1022	3	0,29		
	Telex	0	not relevant	not relevant		
	Email	207	not relevant	not relevant		
	Mariner	0	not relevant	not relevant		
	X25	0	not relevant	not relevant		
	Supervis	0	0	not relevant		
	Total	2322	3	0,13	0	0

2010-Jul	Offenbach	1583	0	0		
	Exeter	248	0	0		
	Telex	0	not relevant	not relevant		
	Email	345	not relevant	not relevant		
	Mariner	0	not relevant	not relevant		
	X25	1	not relevant	not relevant		
	Supervis	8	0	0		
	Total	1831	0	0	8	0,44
2010-Aug	Offenbach	1655	0	0		
	Exeter	255	0	0		
	Telex	0	not relevant	not relevant		
	Email	368	not relevant	not relevant		
	Mariner	0	not relevant	not relevant		
	X25	0	not relevant	not relevant		
	Supervis	0	0	not relevant		
	Total	1910	0	0	0	0
2010-Sep	Offenbach	1506	0	0		
	Exeter	812	0	0		
	Telex	0	not relevant	not relevant		
	Email	347	not relevant	not relevant		
	Mariner	0	not relevant	not relevant		
	X25	0	not relevant	not relevant		
	Supervis	8	0	0		
	Total	2318	0	0	8	0,34
2010-Oct	Offenbach	1367	2	0,15		
	Exeter	516	0	0		
	Telex	0	not relevant	not relevant		
	Email	385	not relevant	not relevant		
	Mariner	0	not relevant	not relevant		
	X25	0	not relevant	not relevant		
	Supervis	2	0	0		
	Total	1883	2	0,11	2	0,11
2010-Nov	Offenbach	1446	4	0,28		
	Exeter	282	0	0		
	Telex	0	not relevant	not relevant		
	Email	376	not relevant	not relevant		
	Mariner	0	not relevant	not relevant		
	X25	0	not relevant	not relevant		
	Supervis	20	0	0		
	Total	1728	4	0,23	20	1,14
2010-Dec	Offenbach	1399	0	0		
	Exeter	284	0	0		
	Telex	0	not relevant	not relevant		
	Email	362	not relevant	not relevant		
	Mariner	0	not relevant	not relevant		
	X25	0	not relevant	not relevant		
	Supervis	1	0	0		
	Total	1683	0	0	1	0,06
Total	Offenbach	17248	11	0,06		
	Exeter	5323	3	0,06		
	Telex	0	0	not relevant		
	Email	3915	3915	100		
	Mariner	0	not relevant	not relevant		
	X25	2	not relevant	not relevant		
	Supervis	40	0	0		
	Total	26528	14	0,06	40	0,18



Remark: Email messages were excluded from the number of messages in error and from the relative percentage as values are regarded as not relevant. Not relevant percentages are due to not relevant values or to a total amount of data equal to zero.

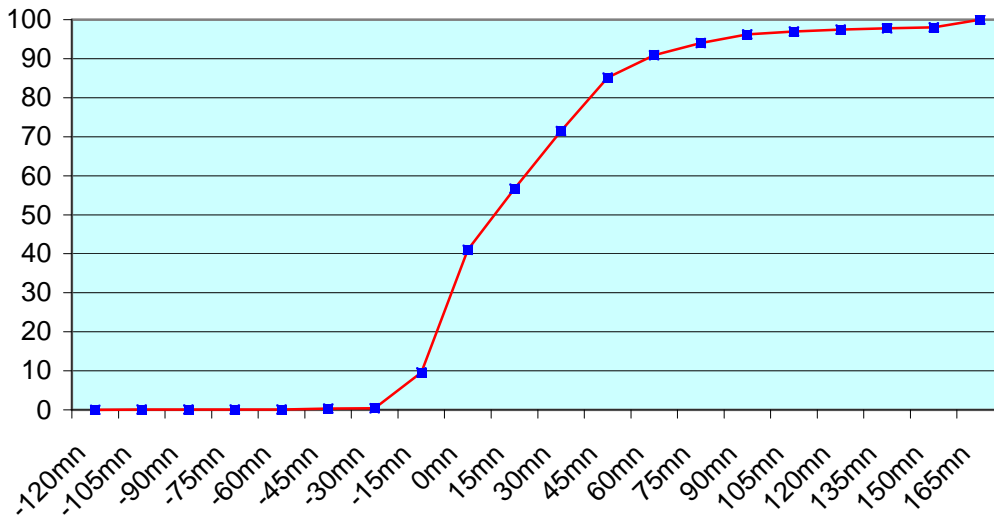
6. Global result of the syntactic check for the messages for each call sign.

Call sign	Nb of messages received	Nb of messages in error	Percentage of messages in error	Nb of messages with operator action	Percentage of messages with operator action
ASEU01	968	0	0	0	0
ASEU02	1012	0	0	0	0
ASEU03	910	0	0	0	0
ASEU04	1162	0	0	0	0
ASEU05	1052	0	0	0	0
ASDE01	1368	0	0	0	0
ASDE02	1180	1	0,08	0	0
ASDE03	1256	0	0	0	0
ASDE04	1140	0	0	0	0
DBLK	1639	4	0,24	0	0
ASGB01	752	0	0	0	0
ASDK01	1388	0	0	0	0
ASDK02	1366	0	0	0	0
ASDK3	1069	6	0,56	2	0,19
ASES01	600	0	0	0	0
ASFR1	891	0	0	15	1,68
ASFR2	1079	0	0	6	0,56
ASFR3	699	0	0	9	1,29
ASFR4	631	0	0	6	0,95
ASIS01	6	0	0	0	0
JGQH	201	0	0	0	0
JDWX	8	0	0	0	0
JNSR	2247	0	0	0	0
Test					
ASDE09	14	0	0	0	0
Wrong or strange call sign					
FQWZ	2	0	0	0	0
OFF	1	0	0	0	0
XXXXX	3867	3	0,08	2	0,05
numer.	20	0	0	0	0

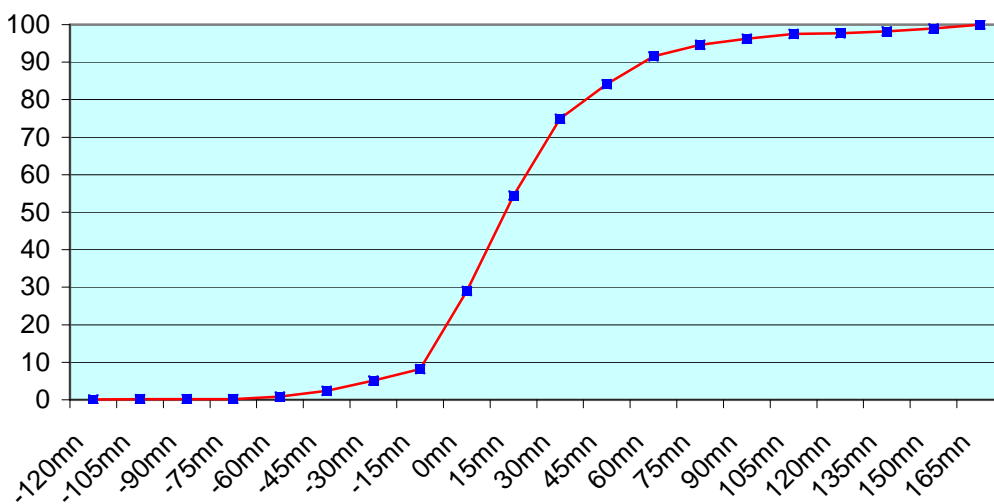
Remark: Data transmitted through email displayed an error rate close to 100% due to email syntax and were thus regarded as not relevant and excluded from errors total amount.

7. Mean time before the integration of the messages in the GTS in Toulouse. HH is the synoptic hour of reference.

OFF (17248 report parts)

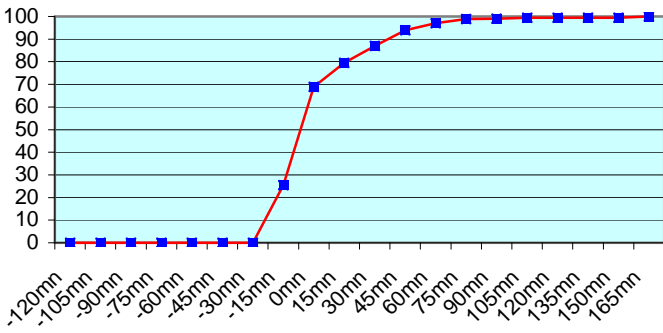


EMAIL (3915 report parts)

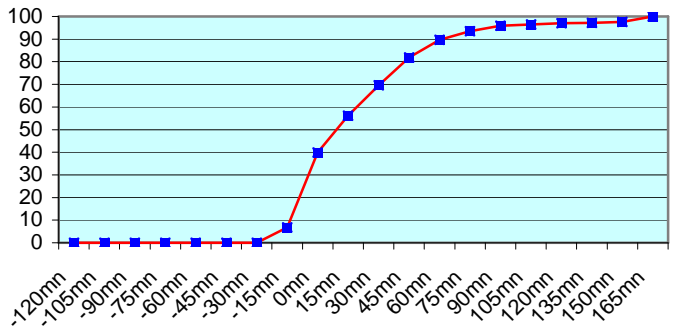




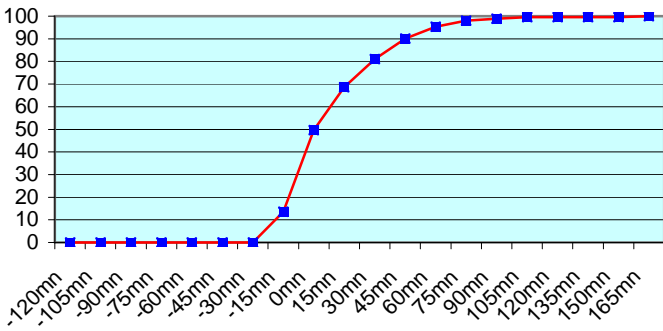
ASEU01 (968 report parts) Offenbach 968



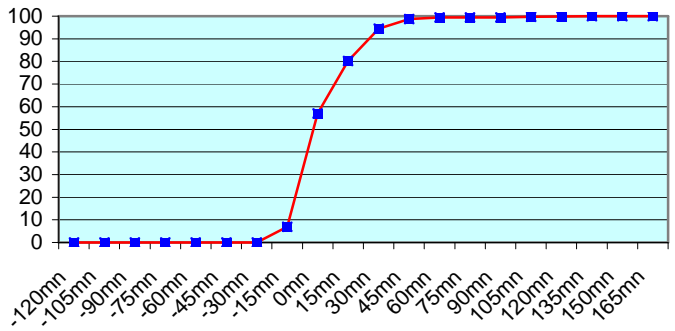
ASEU02 (1012 report parts) Offenbach 1012



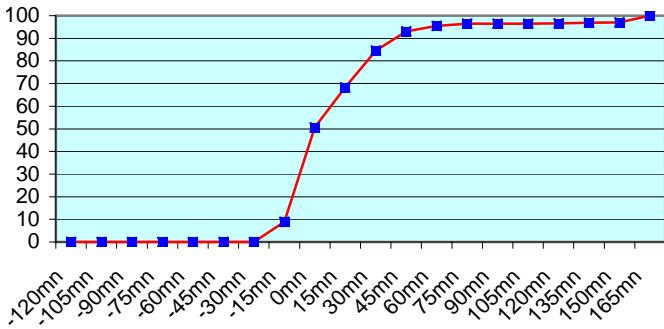
ASEU03 (910 report parts) Offenbach 910



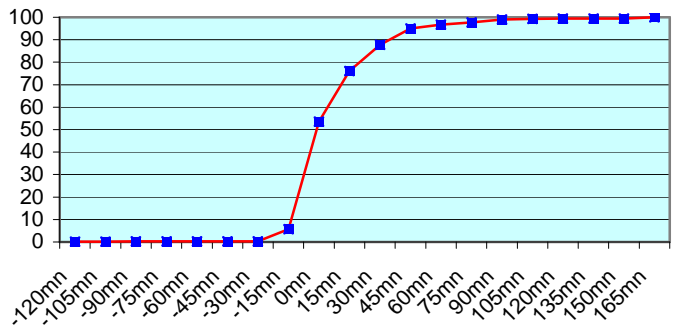
ASEU04 (1162 report parts) Offenbach 1162



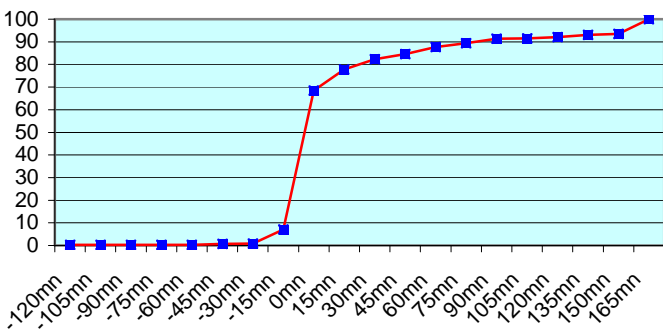
ASEU05 (1052 report parts) Offenbach 1052



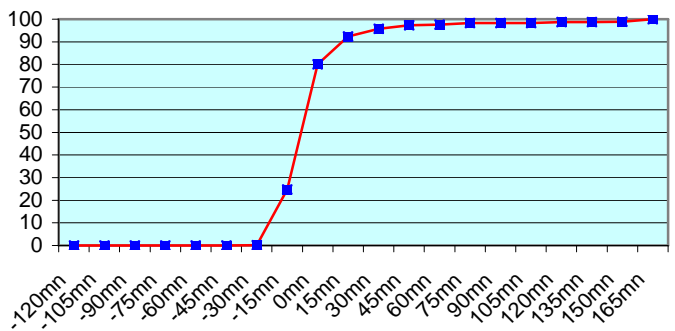
ASDE01 (1368 report parts) Offenbach 1368

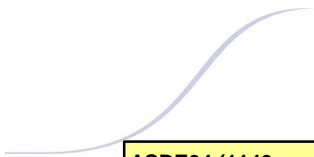


ASDE02 (1180 report parts) Offenbach 1180

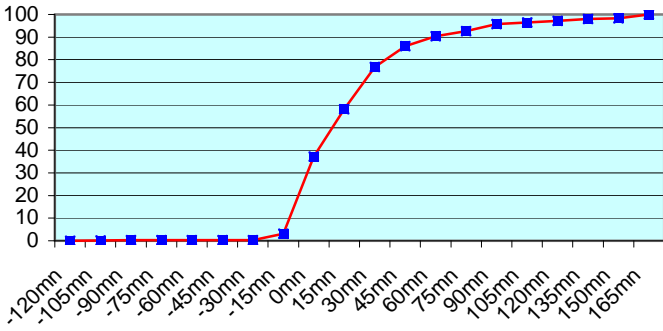


ASDE03 (1256 report parts) Offenbach 1256

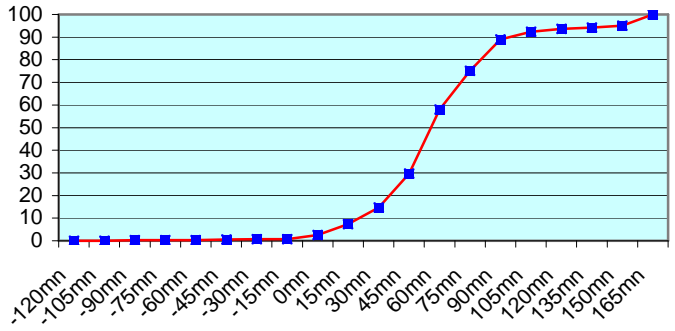




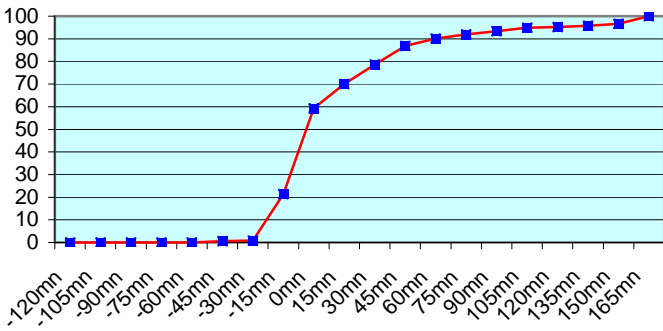
ASDE04 (1140 report parts) Offenbach 1140



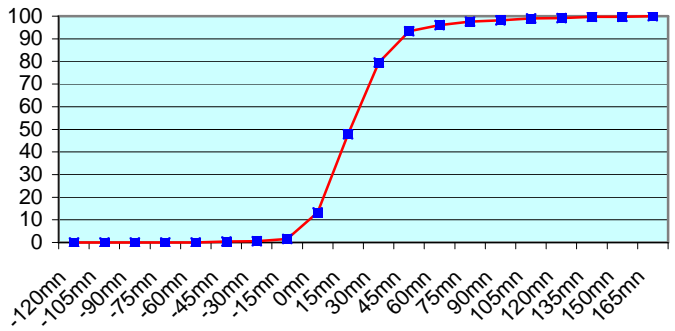
DBLK (1639 report parts) Offenbach 1639



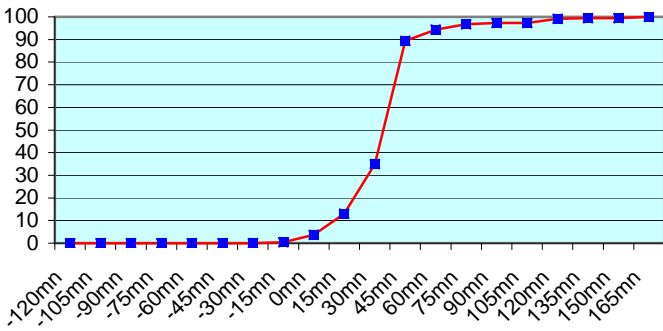
ASGB01 (752 report parts) Offenbach 752



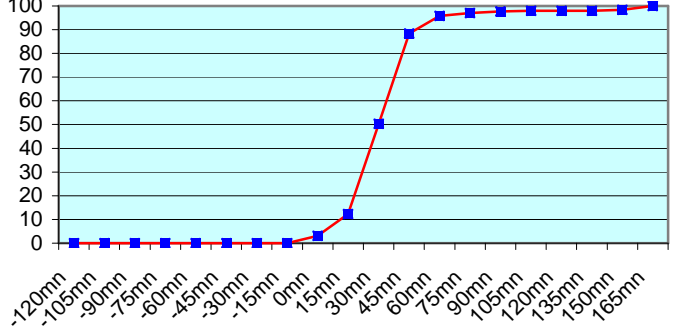
ASDK01 (1388 report parts) Offenbach 1388



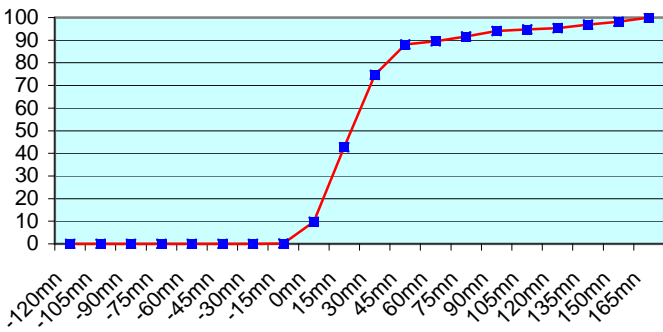
ASDK02 (1366 report parts) Offenbach 1366



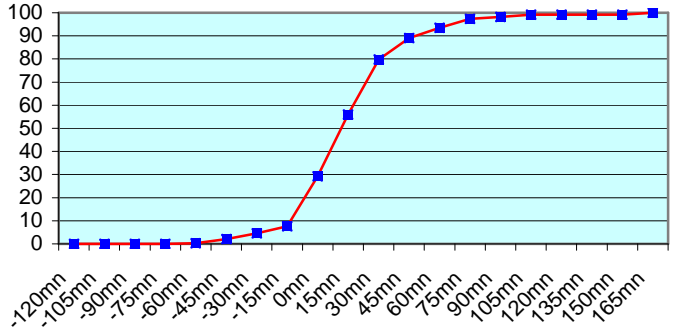
ASDK3 (1069 report parts) Offenbach 1067 with supervision 2

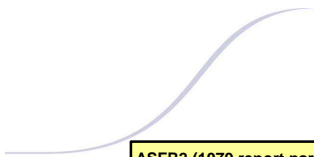


ASES01 (600 report parts) Offenbach 205 Email 395

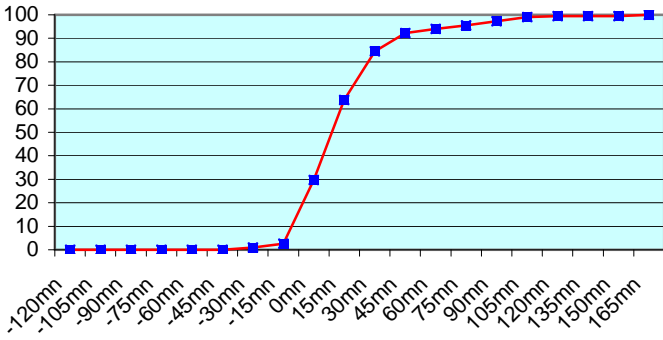


ASFR1 (891 report parts) Email 876 with supervision 15

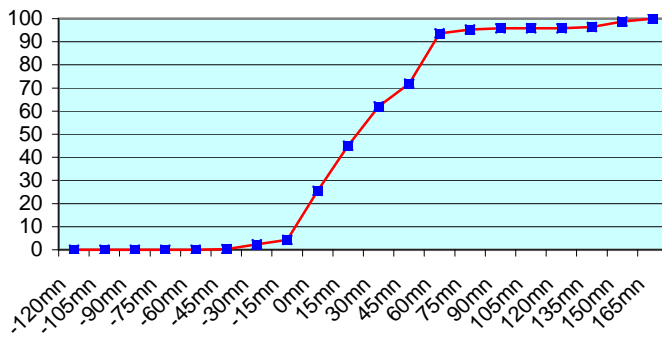




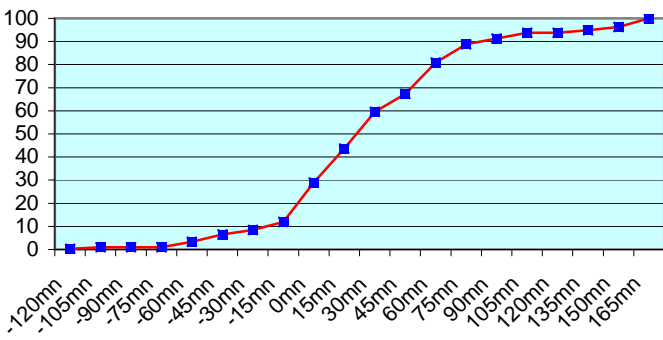
ASFR2 (1079 report parts) Email 1073 with supervision 6



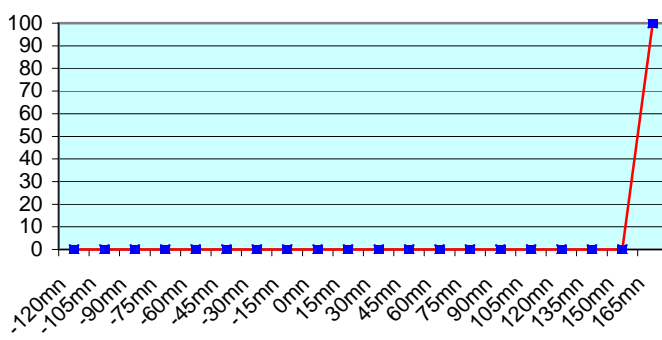
ASFR3 (699 report parts) Email 690 with supervision 9



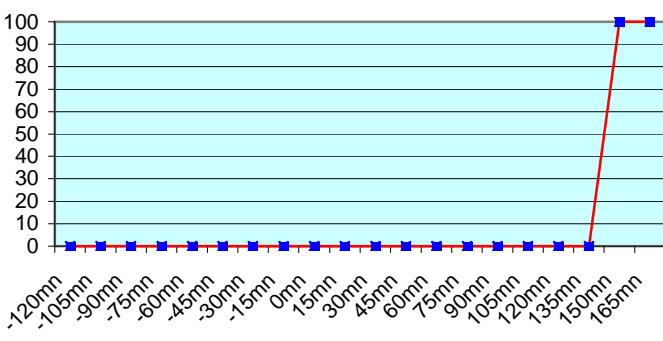
ASFR4 (631 report parts) Email 624 with supervision 6



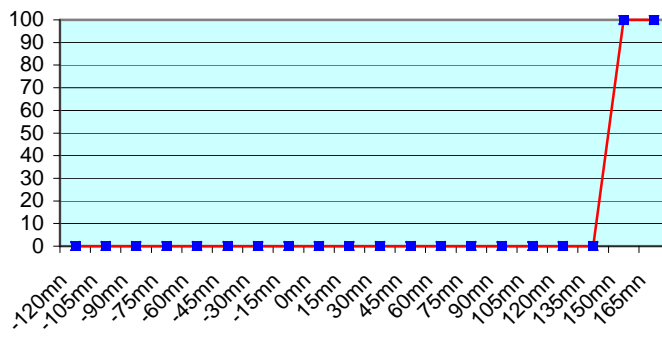
ASIS01 (6 report parts) Offenbach 6



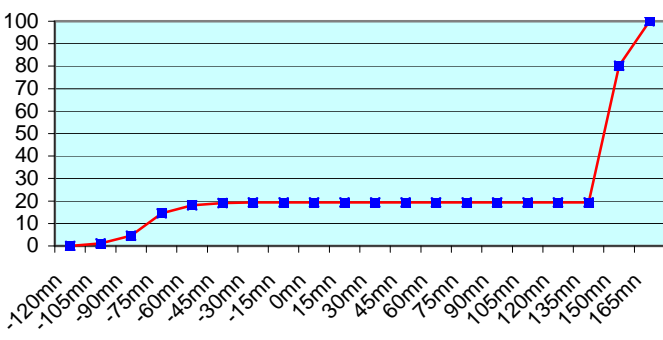
JGQH (201 report parts) Exeter 201



JDWX (8 report parts) Exeter 8



JNSR (2247 report parts) Exeter 2247



During 2010, Météo-France Toulouse received 6632 upper air messages (TEMP) from ships. This number of messages is less than it was in 2009 (7541).

Call Sign	Messages received in 2009	Messages received in 2010	Difference 2010-2009
ASEU01	970	968	-2
ASEU02	1167	1012	-155
ASEU03	524	910	+386
ASEU04	1076	1162	+86
ASEU05	1326	1052	-274
ASDE01	1457	1368	-89
ASDE02	1148	1180	+32
ASDE03	962	1256	+294
ASDE04	1865	1140	-725
DBLK	1150	1639	+489
ASGB01	795	752	-43
ASDK01	2147	1388	-759
ASDK02	1118	1366	+248
ASDK3	1213	1067	-146
ASES01	464	600	+136
ASFR1	960	891	-69
ASFR2	971	1079	+108
ASFR3		699	+699
ASFR4		631	+631
ASIS01		6	+6
JGQH	462	201	-261
JDWX	208	8	-200
JNSR	529	2247	+1718
JCCX	101		-101
JIVB	47		-47
LDWR	4933		-4933
Test ASDE09	264	14	-250
Wrong or strange call sign	4093	3890	-203

The reports were received from 24 different call signs; one of them was a test call sign. The quality of the ASAP reports was generally of a high standard, with only a small percentage of erroneous data.

Some ships have had difficulties in 2010 and the delay was from time to time larger than expected. The two new ships have needed some time to run on nominal mode.

Some corrupted call signs can be seen from time to time.

For any comment or remark please contact Météo-France Toulouse DSO/DOA department

Gérard Rey (gerard.rey@meteo.fr)
 Daniel Bouchara (daniel.bouchara@meteo.fr)
 Hugues Jardat (hugues.jardat@meteo.fr)