



ER Interpretation

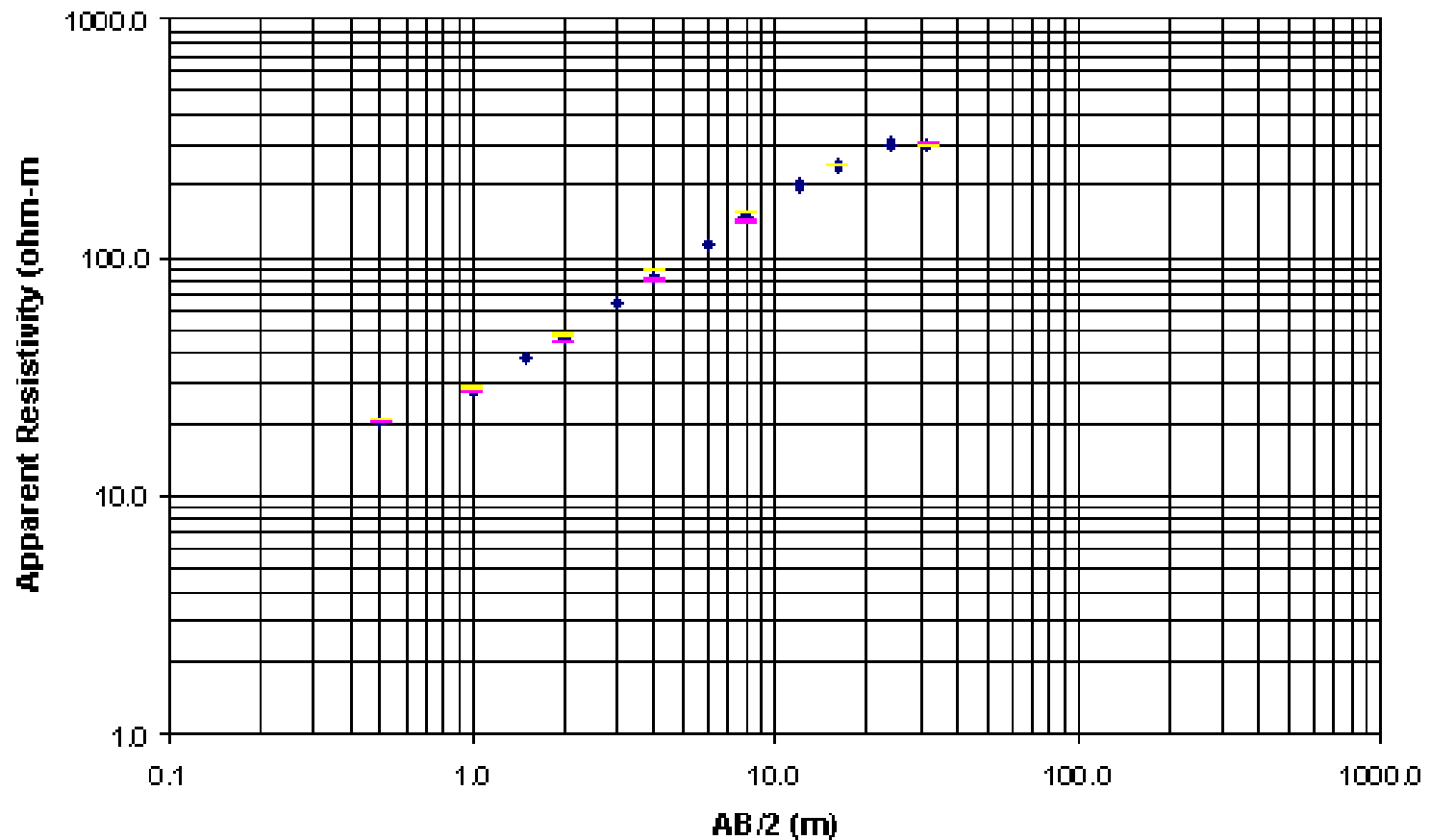


Field sheet

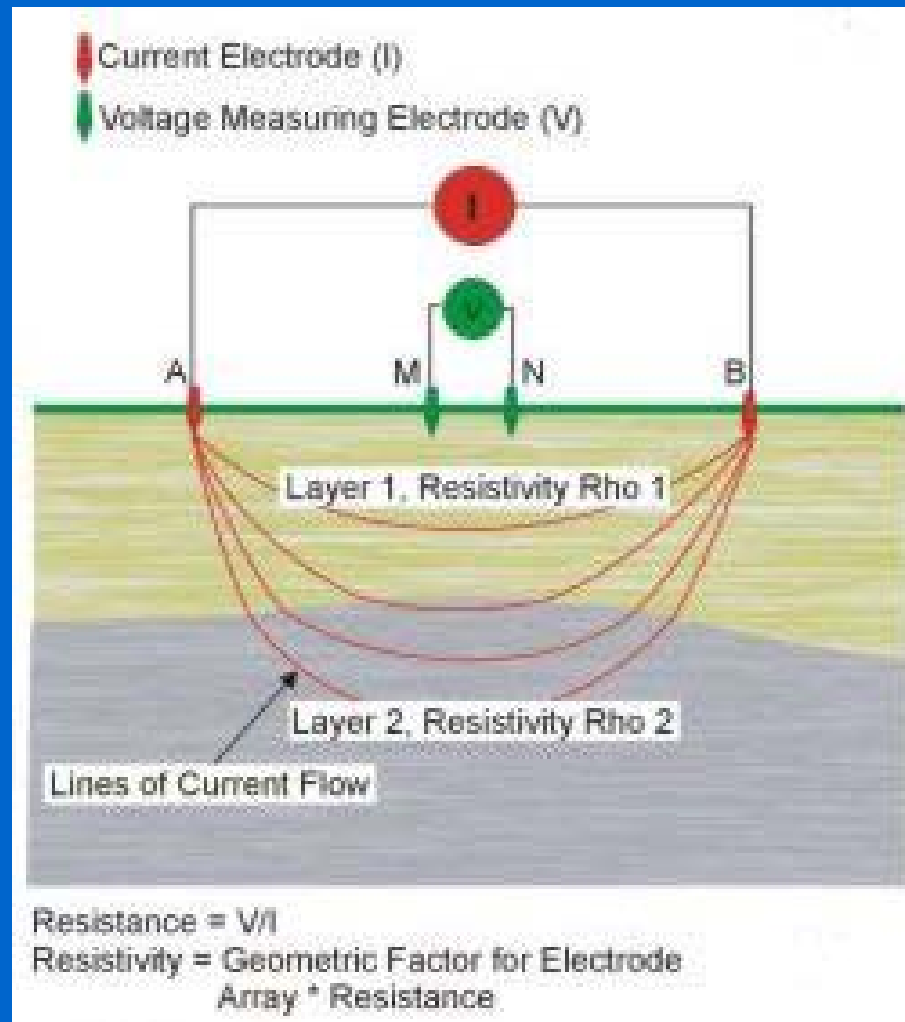
Site:				Ref No:			Weather:			
Observers:				Bearing:			Topography:			
Date:				Soil:			Geology:			
SETTING (n)	OBSERVED MEASUREMENTS					ERRORS			SPACING (metres)	WENNER RESISTIVITY
	RA	RC	RD1	RD2	RB	OBS	OFFSET	LATERAL		
1									0.5	
2									1.0	
									1.5	
3									2.0	
									3.0	
4									4.0	
									6.0	
5									8.0	
									12.0	
6									16.0	
									24.0	
7									32.0	
									48.0	
8									64.0	
									96.0	
9									128.0	
									192.0	
									256.0	
					RMS Error:					

Plotted Wenner resistivity

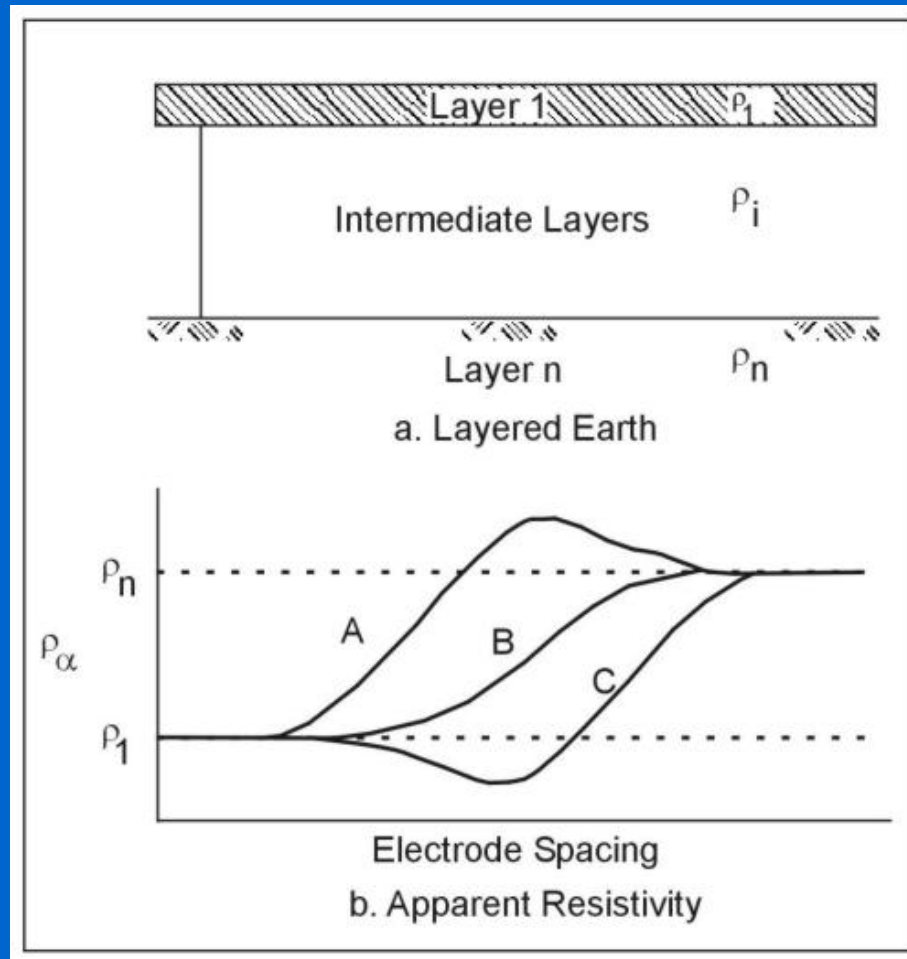
Wenner Sounding Curve



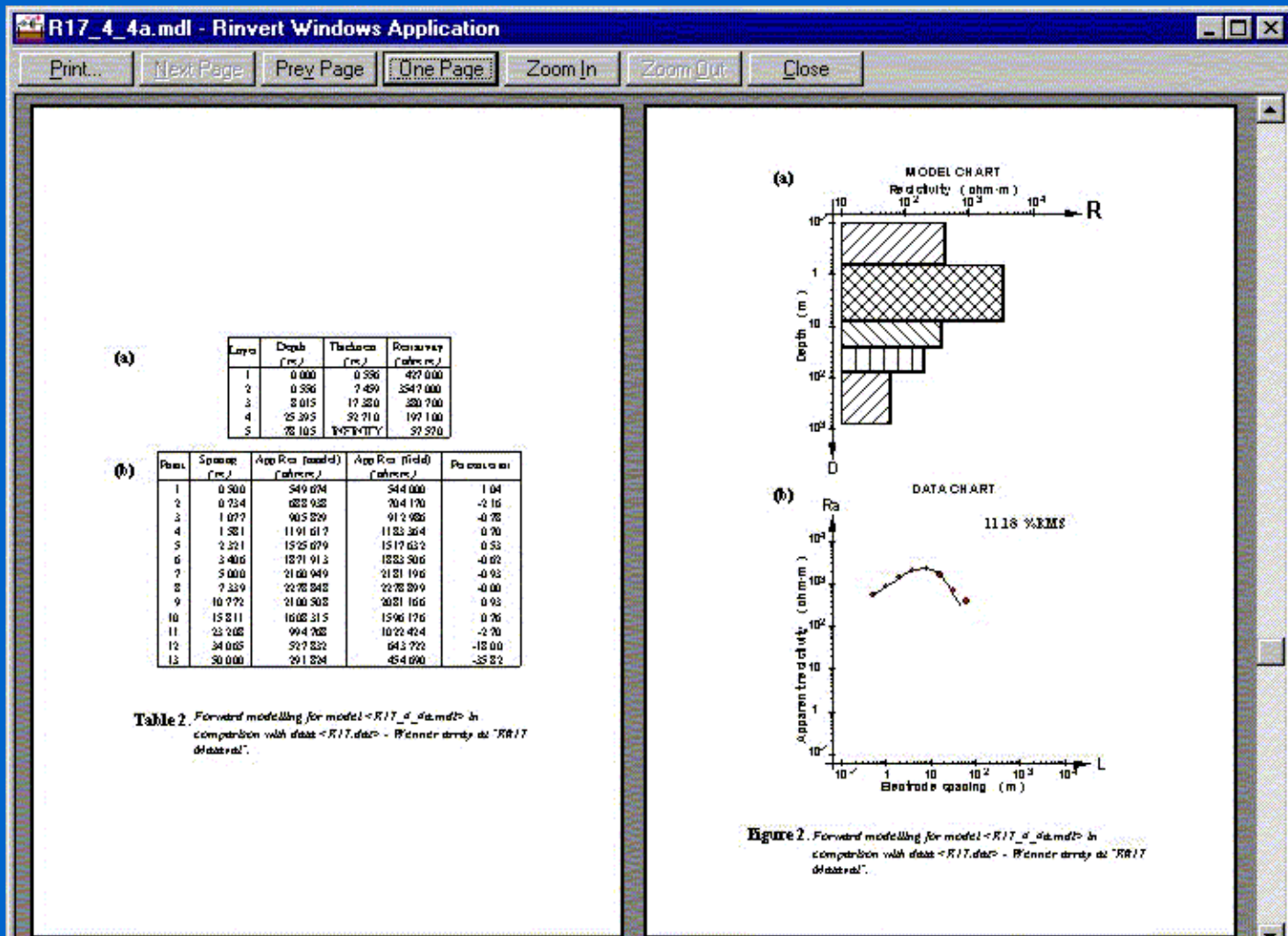
Case study



Interpretation



Intuitive Point and Click Interface



Report Generator

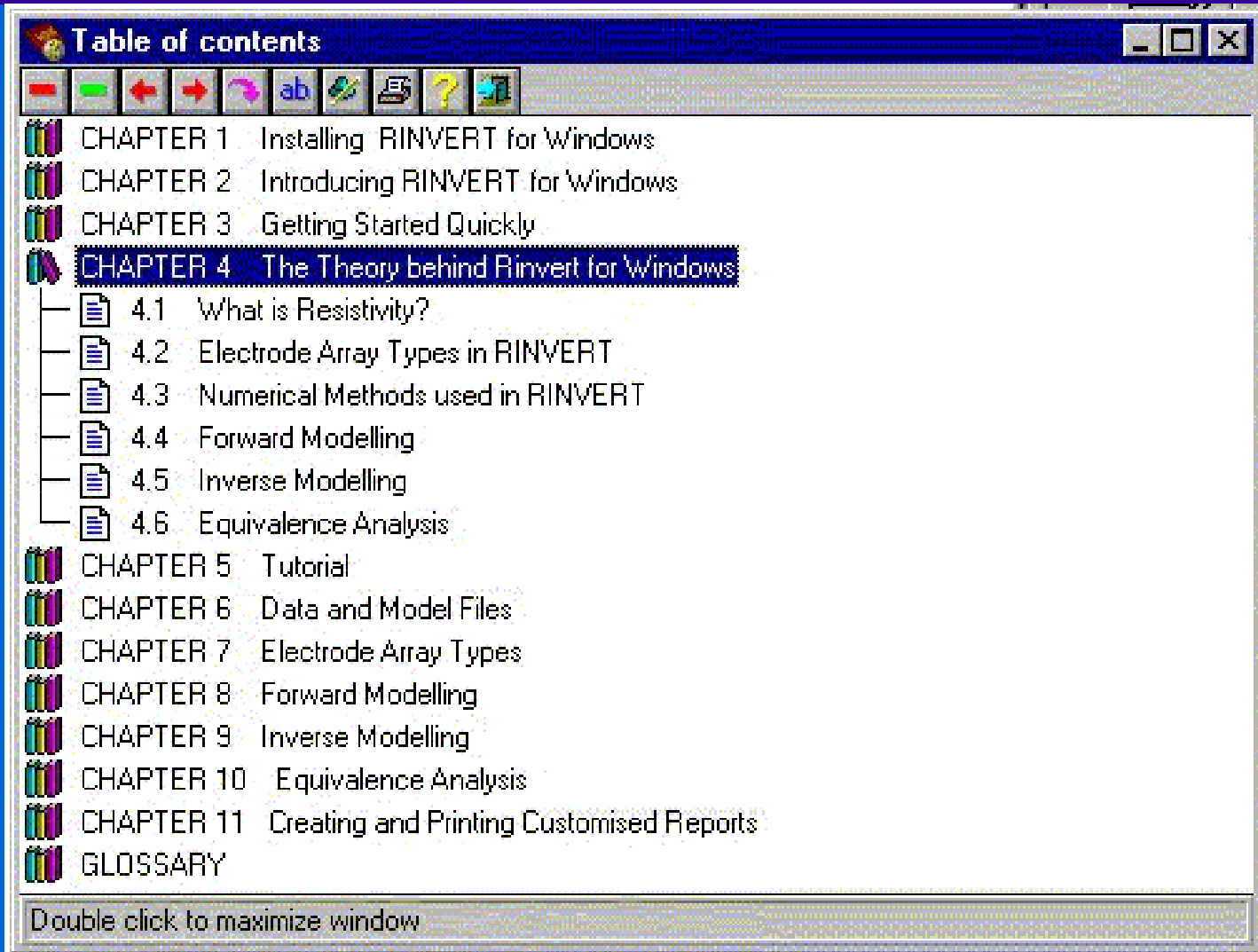
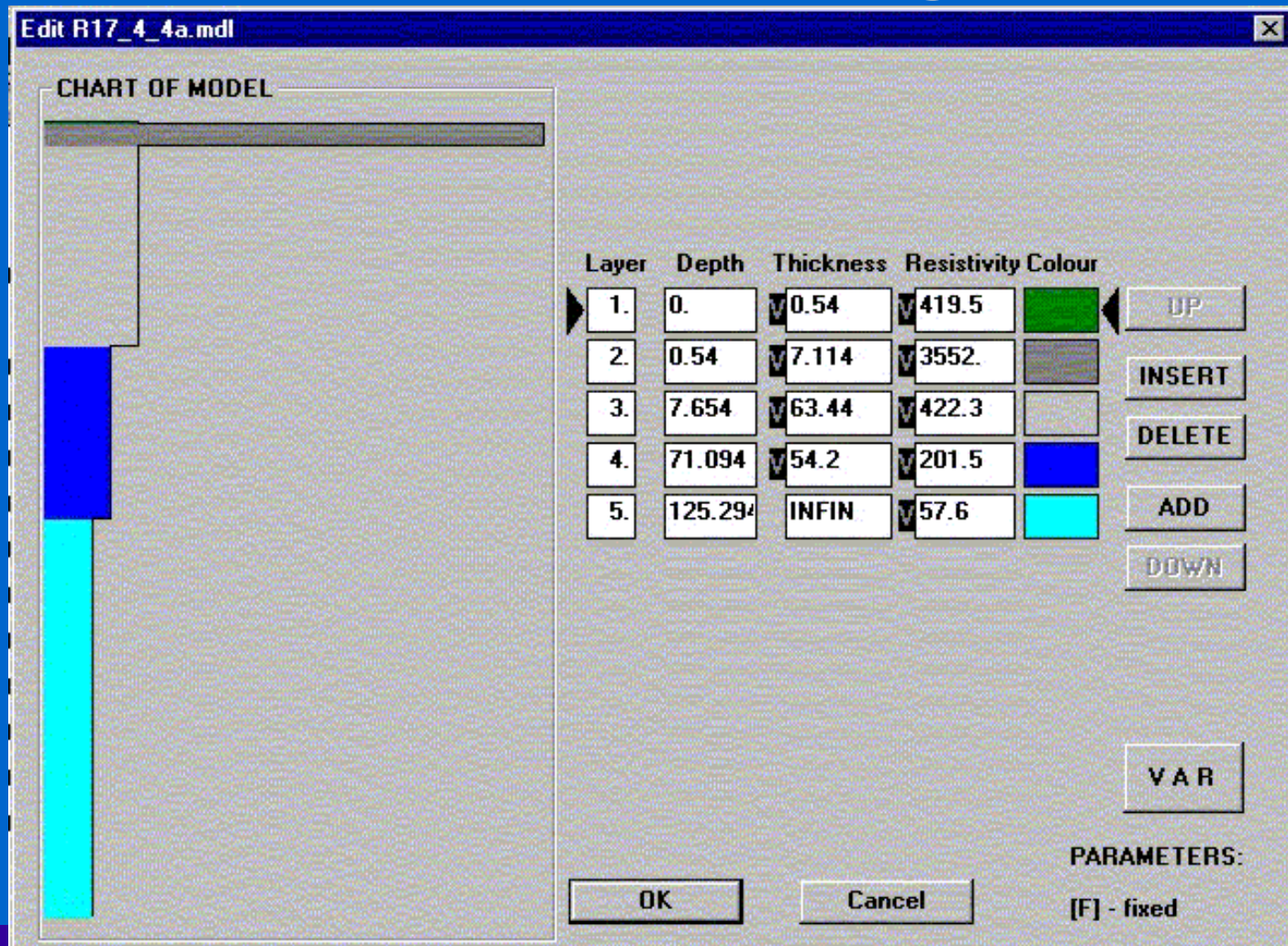


Table of contents

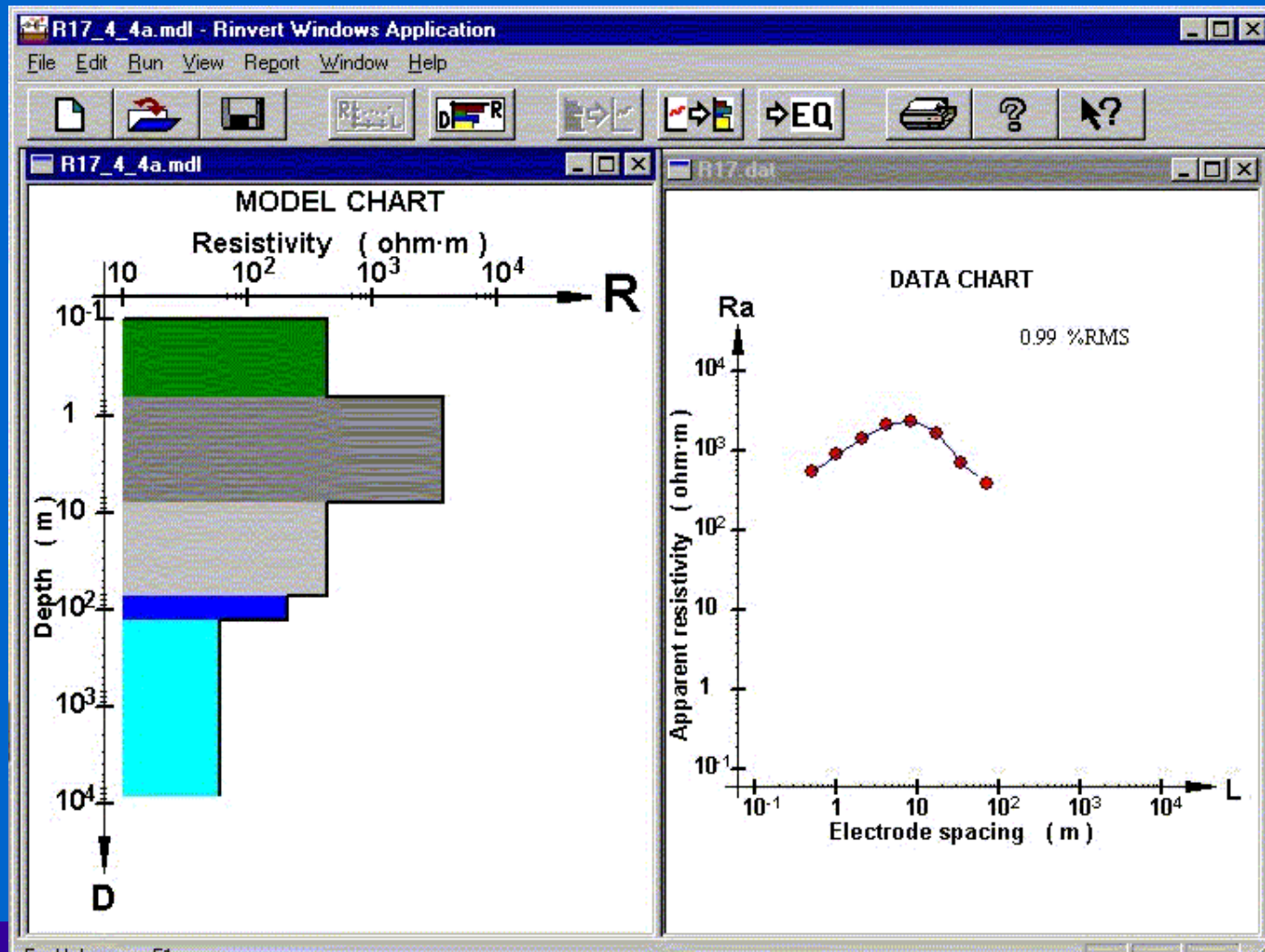
- CHAPTER 1 Installing RINVERT for Windows
- CHAPTER 2 Introducing RINVERT for Windows
- CHAPTER 3 Getting Started Quickly
- CHAPTER 4 The Theory behind Rinvert for Windows**
 - 4.1 What is Resistivity?
 - 4.2 Electrode Array Types in RINVERT
 - 4.3 Numerical Methods used in RINVERT
 - 4.4 Forward Modelling
 - 4.5 Inverse Modelling
 - 4.6 Equivalence Analysis
- CHAPTER 5 Tutorial
- CHAPTER 6 Data and Model Files
- CHAPTER 7 Electrode Array Types
- CHAPTER 8 Forward Modelling
- CHAPTER 9 Inverse Modelling
- CHAPTER 10 Equivalence Analysis
- CHAPTER 11 Creating and Printing Customised Reports
- GLOSSARY

Double click to maximize window

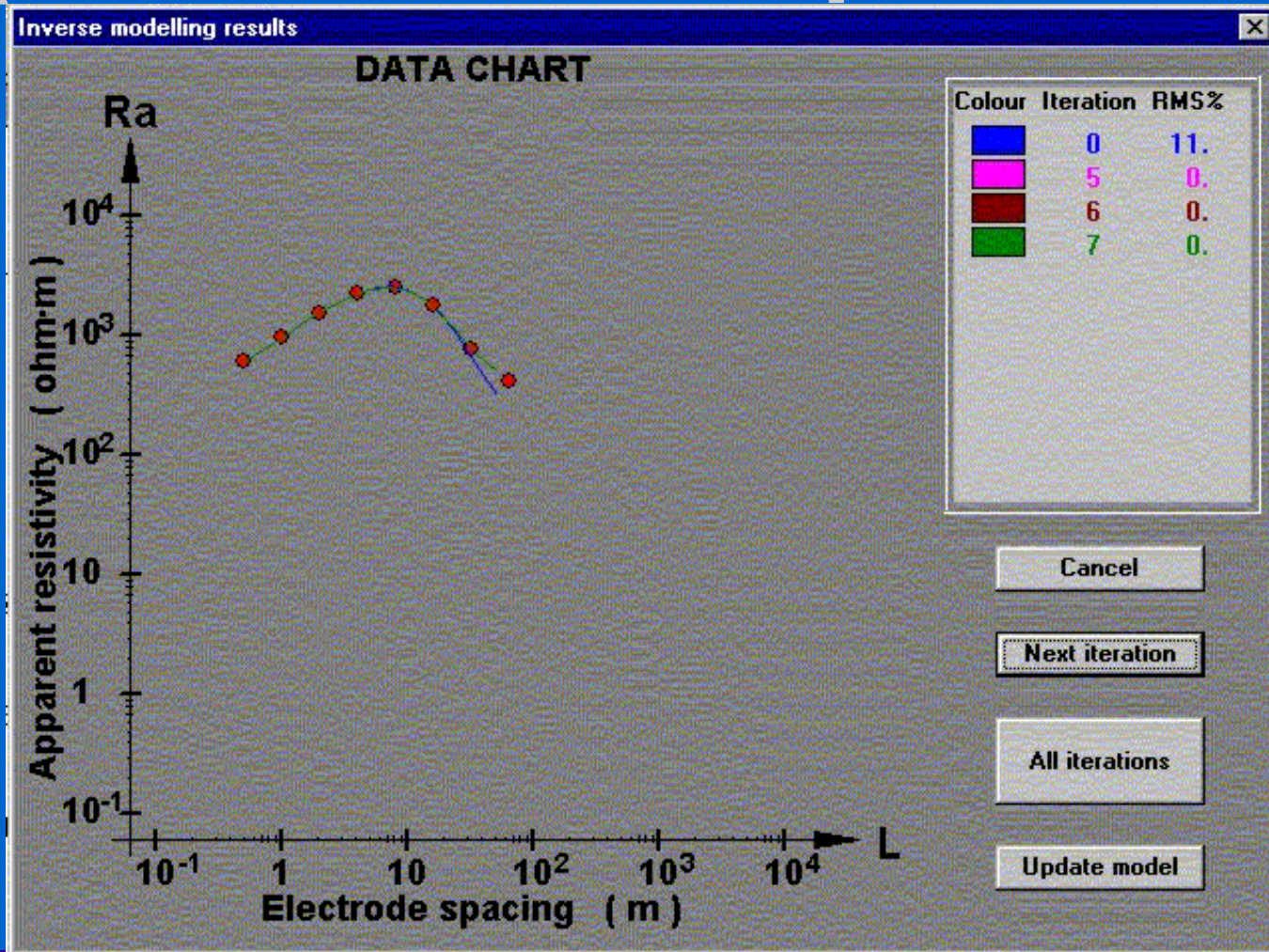
Comprehensive and Context Sensitive Help System



Forward Modelling (Simulation)



Inverse Modelling (Automatic Interpretation)



Equivalence Analysis

